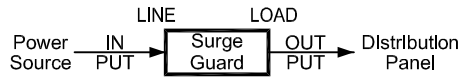


WARNING: This Surge Guard device must be installed by a licensed electrician or by an RV dealer.

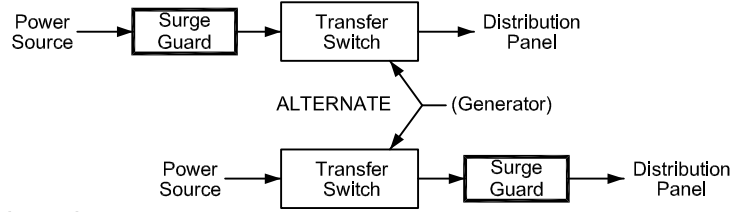
PROTECTING SOURCE POWER ONLY:

1. Disconnect RV power cord from source power.
2. Locate Surge Guard® in the RV's electrical compartment. Unit should be located where lights are clearly visible to the user.



PROTECTING BOTH SOURCE AND GENERATOR POWER:

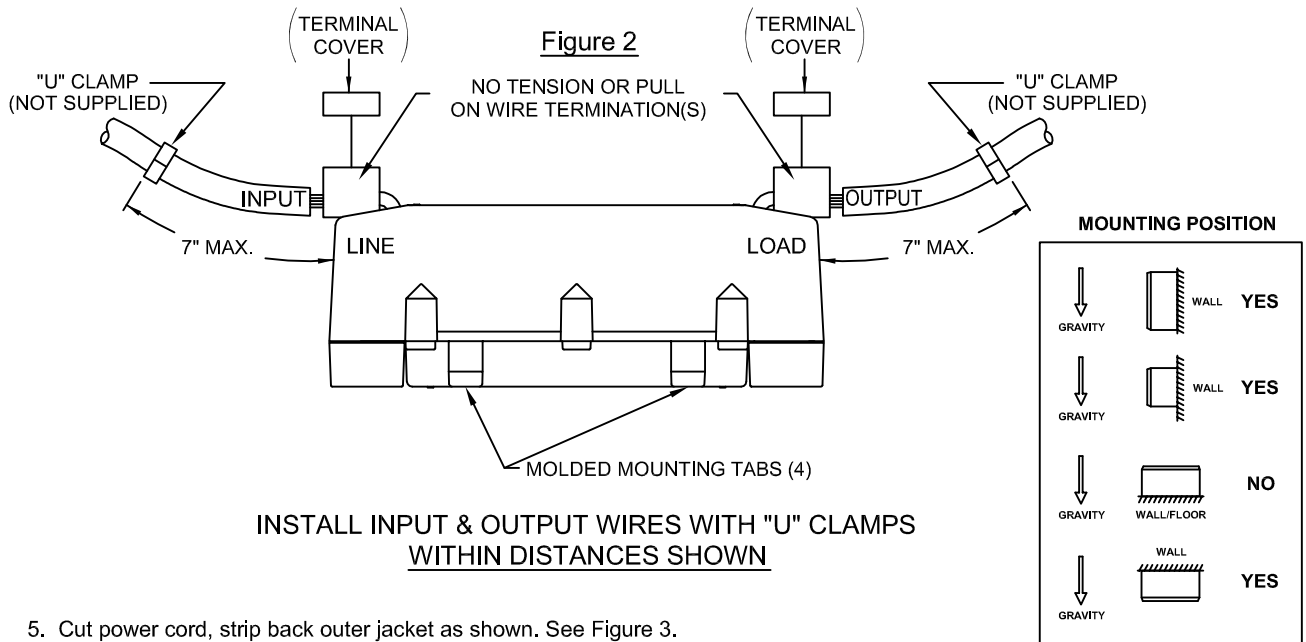
1. Disconnect RV power cord from source power.
2. Locate Surge Guard® next to transfer switch. Unit should be located where lights are clearly visible to the user.



ADDITIONAL CABLE USED MUST BE ELECTRICALLY EQUIVALENT TO ORIGINAL EQUIPMENT

MOUNT SURGE GUARD IN RV ELECTRICAL COMPARTMENT

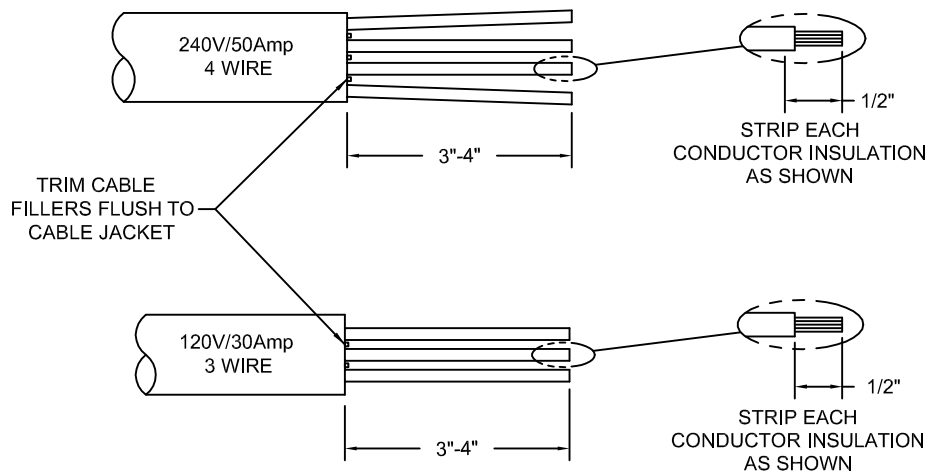
1. Position so LINE end is facing direction of incoming power cord.
2. Using #10 hardware, mount unit securely in place using molded mounting tabs.
3. Remove Terminal Block Covers. (Model 34520 only).
4. Route Primary Cable into position (over exposed terminals or into terminal block wells) - allowing enough slack to eliminate stress or tension on cable connections to be made. See Figure 2.



5. Cut power cord, strip back outer jacket as shown. See Figure 3.

Figure 3

NOTE: WIRE PREPARATION IS THE SAME FOR ALL CABLES (EXCEPT AS NOTED)



6. Each conductor is to be installed as shown. See Figures 4, 4A, 5 & 5A.

Figure 4 - (50 Amp Model 34560)

Figure 4A - (30 Amp Model 34520)

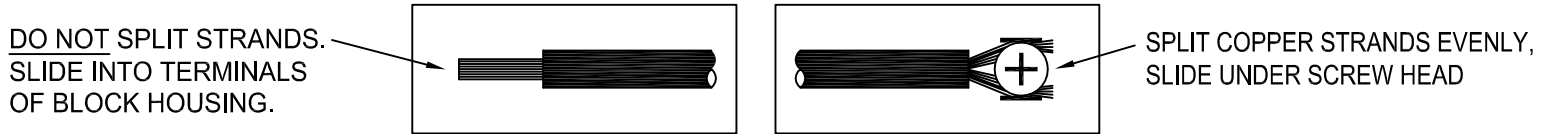
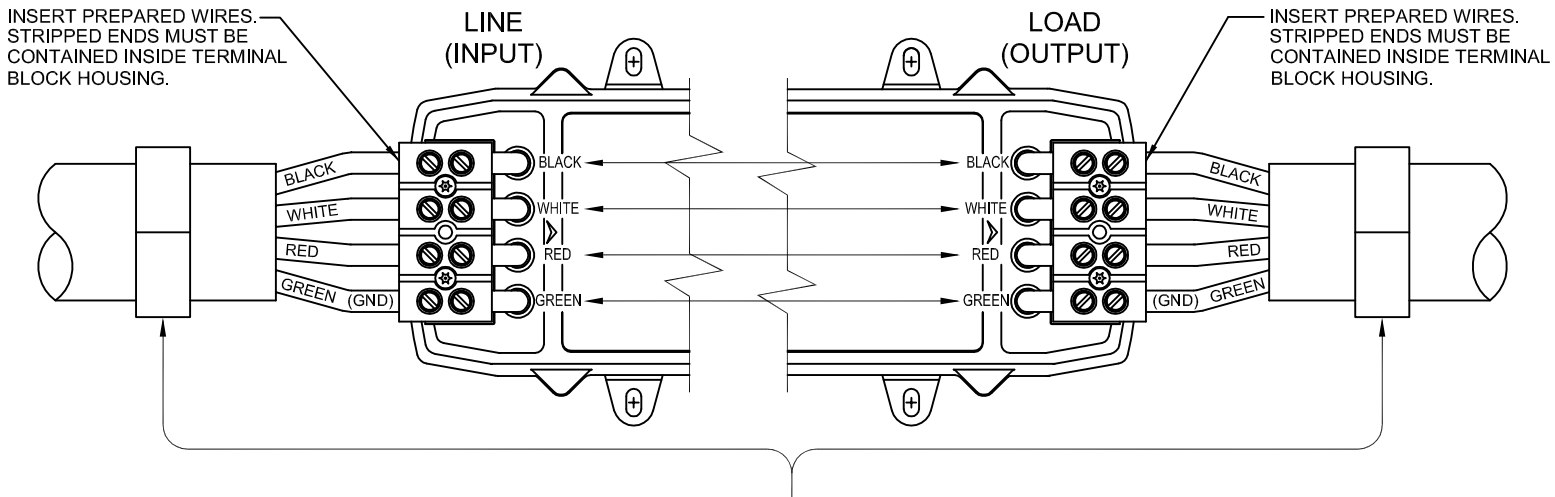


Figure 5

120/240V-50 AMP MODEL #34560

IMPORTANT NOTE - TORQUE PER CONNECTION = 16 IN - LBS.



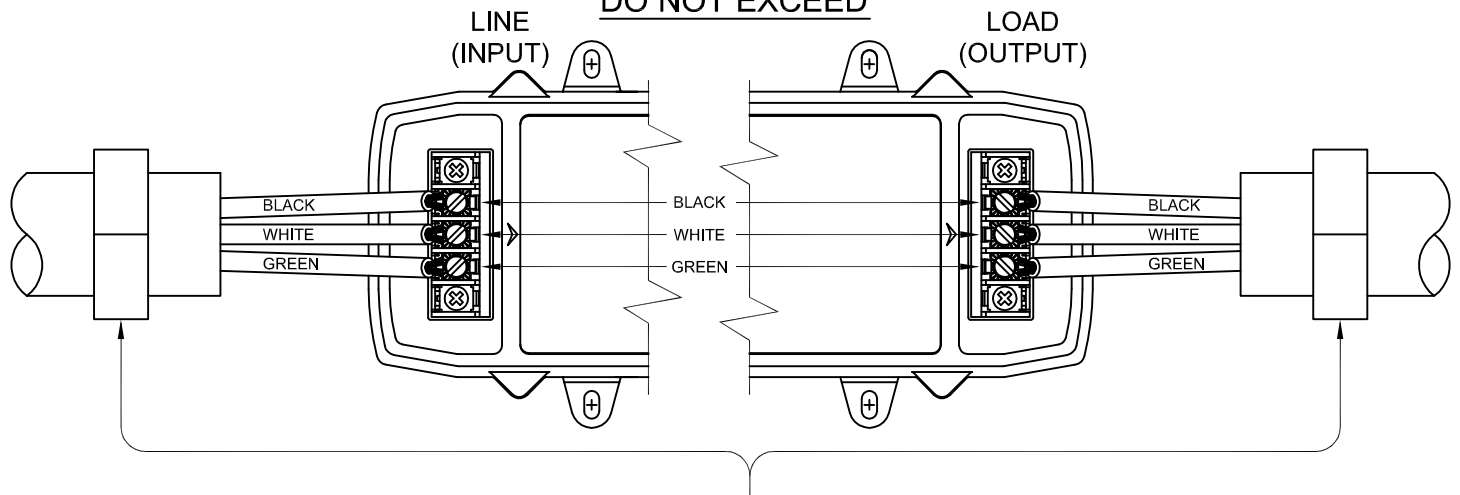
AFTER CONNECTIONS ARE MADE, SECURE BOTH LINE & LOAD SIDE CABLES. USE "U" CLAMPS (NOT SUPPLIED) TO PREVENT STRAIN ON TERMINAL CONNECTIONS.

Figure 5A

120V-30 AMP MODEL #34520

IMPORTANT NOTE - MAX. TORQUE PER CONNECTION = 7 IN - LBS.

DO NOT EXCEED



AFTER CONNECTIONS ARE MADE, SECURE BOTH LINE & LOAD SIDE CABLES. USE "U" CLAMPS (NOT SUPPLIED) TO PREVENT STRAIN ON TERMINAL CONNECTIONS.

7. Recheck tightness of ALL connections - **REINSTALL TERMINAL COVERS** removed in Figure 2.